

METRIC MIND CORPORATION

Generation 2



EVVISION™

UNIVERSAL ELECTRIC VEHICLE GAUGE AND MONITOR

USER'S MANUAL

© Metric Mind Corporation 1999-2011
All Rights Reserved
Rev. 1.0.04 May 12, 2011

Table Of Contents

Introduction 4

Standard functions of the EVision. 6

EVision model selection..... 8

The display color information: 9

The hardware supplied:..... 10

Main controller interface 35 pin Ampseal connector pinout 18

Shunt measurement PCB..... 19

Speed sensor wire color specification: 20

Interfacing to EVision 21

Installing and setting up EVision. 22

EVision operation..... 32

Specifications..... 44

Glossary..... 45

Appendix 1 48

Appendix 2 49

Index..... 50

Introduction

Thank you for purchasing EVision – universal electric vehicle gauge and monitor. Your EVision is a second generation of sophisticated and precise measurement instrument – the only one on the market allowing you to observe at once and record so many parameters related to EV performance as well as realize several vehicle body and drive/charge subsystems control functions. It is designed to work as stand alone instrument and does not require the presence of a VCU or any other electronic subsystems in the vehicle. However having standard CAN architecture for its data traffic EVision can be part of a BMS or other electric vehicle control system¹.

Please read this manual before installing and using EVision.

ATTENTION: Even partially charged battery may possess more energy than you may realize. Traction pack voltage is present on the DC/DC converter section of the measurement board at all times. Observe precaution when installing and servicing the system. Always connect the HV traction pack last and disconnect it first. Always insulate exposed hot ends of high voltage wiring when disconnected from the EVision shunt measurement printed circuit board (PCB).

The high voltage section of the shunt measurement PCB (EVision power supply) is connected directly to the traction battery. However, this section is galvanically isolated from all the other sub-blocks, as well as from the vehicle body. The isolated voltage generated by the power supply on the shunt measurement PCB is 7.5VDC and is used to power HMI PCB² and Display PCB.

¹ To take advantage of the CAN based architecture, compatible instrumentation must use the same communication standard as used by EVision.

² See glossary on page 41 for definitions and acronyms used throughout this manual.

Introduction (continued)

The RS232C serial port allows monitoring and recording all running parameters as well as configuring the instrument and upgrade its firmware. It is galvanically isolated from all other circuits including vehicle auxiliary 12V battery and vehicle body. When an external laptop or PC is connected to EVision to capture data, it can be powered either from its own battery or directly from vehicle's auxiliary 12V battery. Connecting a laptop to the RS232 serial port and capturing streaming data has no impact on the operation of EVision.

The vehicle auxiliary 12V battery is not isolated from the main controller, however it is not being used to power EVision. All EVision sub-blocks get power from the main traction battery only (via the integrated isolated DC-DC converter). Auxiliary 12V battery is only required to enable certain modes of operation. Its voltage is only being monitored and displayed.

You can download the latest version of this manual as well as accompanying software from the Metric Mind Corporation web site: <http://www.metricmind.com/evision.htm>

Standard functions of the EVision.

Display (and output to capture) in real time:

For Traction battery

- instantaneous voltage, V
- instantaneous current in or out, A
- Instantaneous power in or out, kW
- Current capacity, Ah
- Current energy, kWh
- Current SOC, %
- Current temperature (highest of 2 zones)
- Indication of direction of battery current, OUT (drive) or IN (regen or charging)
- Cycle life, full cycles
- Pack Imbalance detection and measurement

For Auxiliary 12V battery

- Instantaneous voltage (V)

For Vehicle

- Energy consumption, Wh/mile¹ and/or miles/kWh
- Distance to empty estimation
- Time to full estimation (in charging mode)
- Optional fiber optic interface to the vehicle Battery Management System (BMS) or other instrumentation

¹Metric units version: Distance – km, Tire pressure – kg/cm². All related computed values (e.g. efficiency Wh/[distance unit]) are adjusted and displayed accordingly.

Standard functions of the EVision (continued).

(continuing):

- Indication of charging status
- Stock analog fuel gauge drive
- Display night time dimming and HMI illumination
- Automatic Sleep mode with wake up on *IGNITION ON* or *CHARGER ON* signals
- Power steering pump control via isolated driver circuitry¹

Instrument:

- Capture live data streaming from the serial port²
- Download and Upload configuration parameters and upgrading firmware
- Long retention of the internal RTC (Real Time Clock) setup for correct time stamping

Optional functions³ are:

- Tire pressure measurement, all 4 wheels⁴
- Cruise control
- Charger, BMS and other subsystems control via I/O expansion module

¹Using hydraulic power steering pump requires external power driver hardware amplifying control signal.

² PC or Palmtop with serial interface and capable of running HyperTerminal required.

Imperial units version: Distance – miles, Tire pressure – PSI

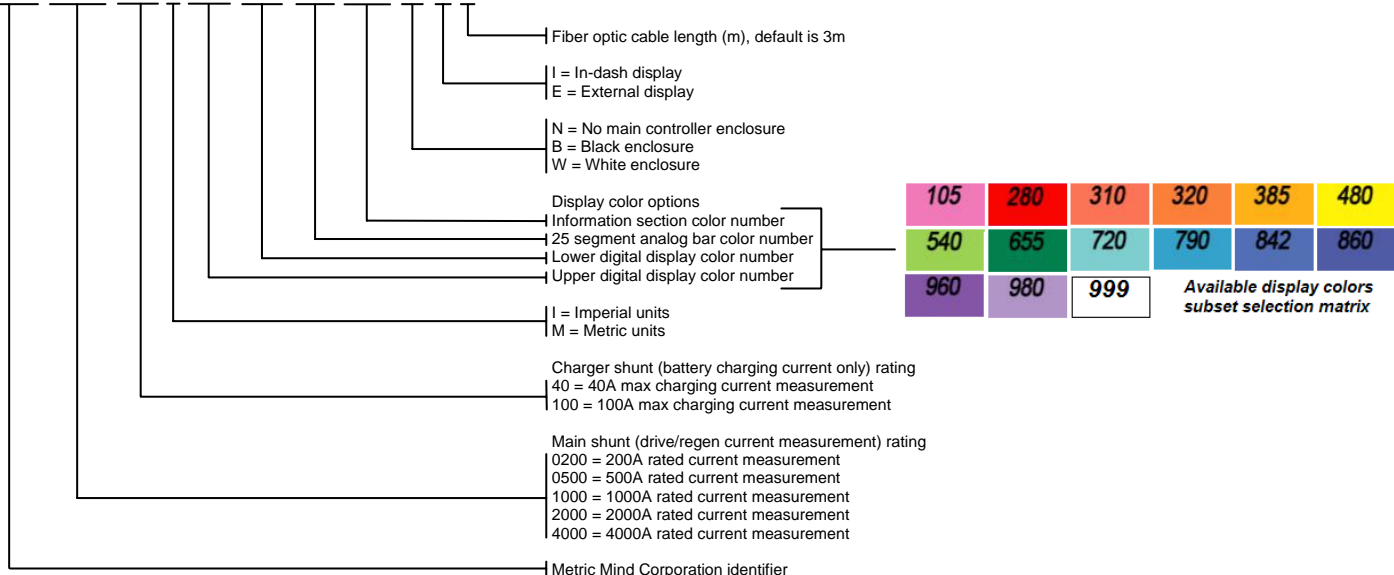
³ Please contact Metric Mind Corporation to find out more regarding available options. Not all options are implemented.

⁴ Requires supporting hardware.

EVision model selection

The ordering code selection matrix for all available options is shown on example below¹:

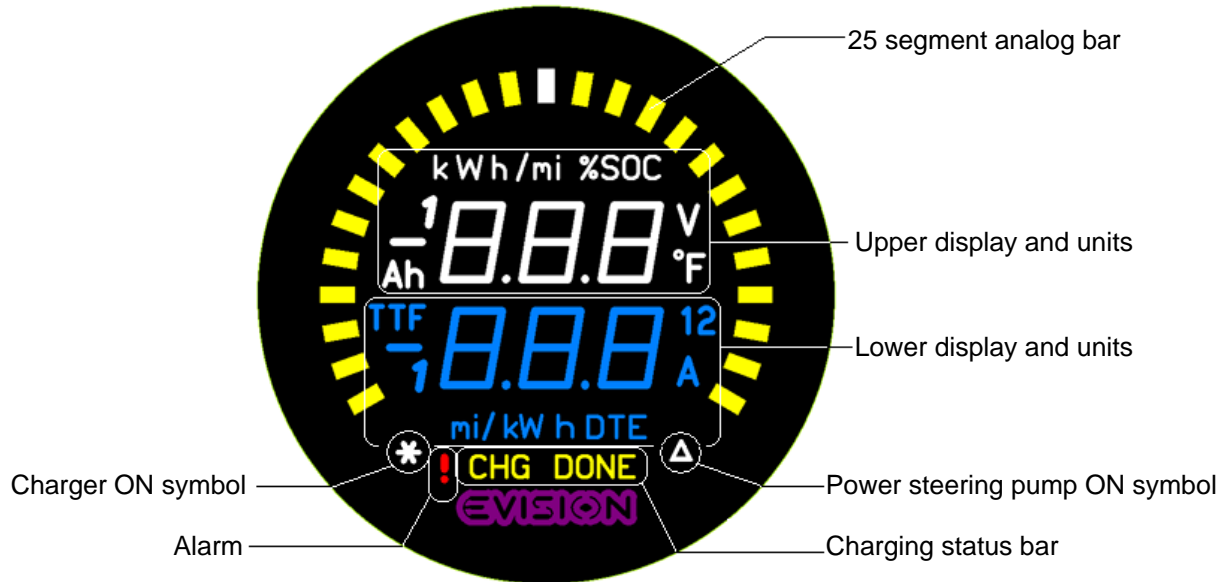
MMC-0500-040-I-999-480-720-540-W-E-3



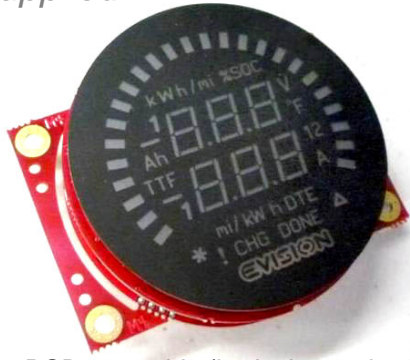
¹ Please be aware that special custom colors selected from the large palette shown in appendix 1 (page 47) will affect purchasing price of the unit.

The display color information:

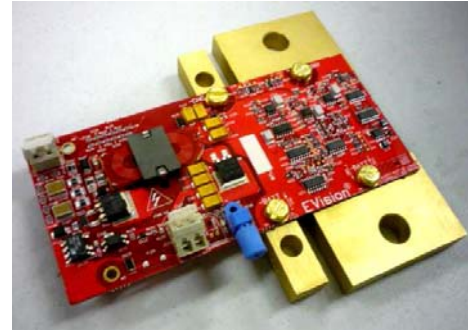
The features of the front overlay are shown below and may aid in selection of the color scheme. The EVision logo always comes in dark purple color as MMC brand color and the alarm symbol “!” is always red. All other fields are customizable per user request. Below is one example how EVision display can be preconfigured for you. You will find all custom colors available for different sections of display in appendix 1 on page 47.



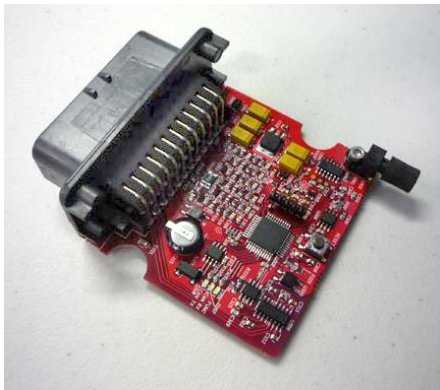
The hardware supplied:



Display PCB assembly (in-dash type is shown)



Shunt measurement PCB



Main controller PCB

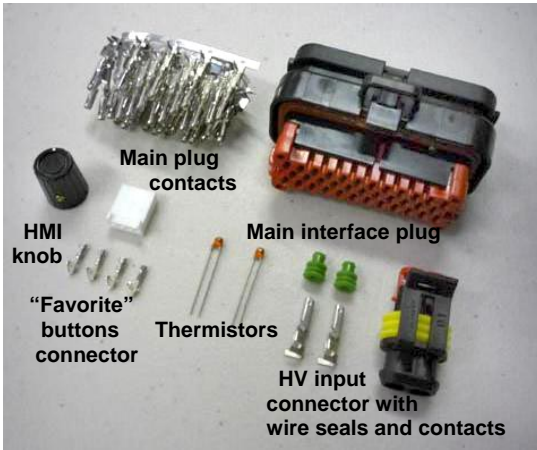


HMI PCB

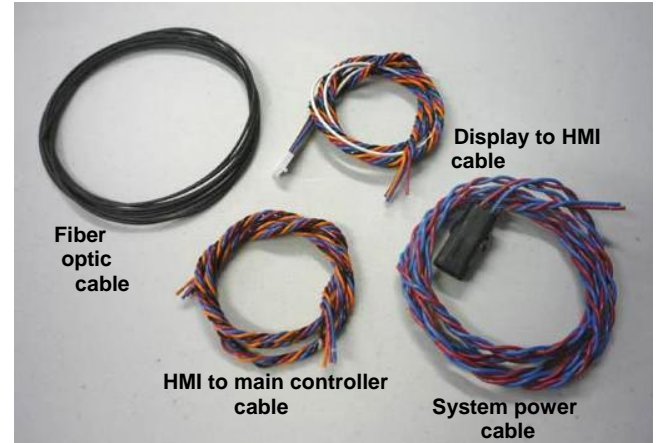


Speed sensor

The hardware supplied (continued)



Accessories hardware



Cables

A CD-ROM with setup utility, firmware and latest user manual available at the time of release is also supplied. Optionally, if ordered, the main controller machined plastic enclosure with the controller PCB mounted inside and external display hood will be supplied.

The hardware supplied (continued)

The EVision LED display unit is supplied either as internal (in-dash) or external (in spherical enclosure). The display is a microprocessor based device which converts related data on the CAN bus to a form suitable for two 3 digit 7-segment LED displays, units and status LEDs and one 25-segment LED analog bar. As there are no control buttons or knobs on the display unit, it can be installed in any location where it is easily observed¹. The display unit is equipped with PWM output to drive any stock analog gauge (if it is based on electromagnetic coil movement rather than stepper motor). Typically a stock fuel gauge is used, in which case EVision output's PWM duty cycle can be programmed to output a signal proportional to the battery SOC level.

The main controller PCB consists of microprocessor, galvanically isolated RS232C serial interface, RTC, CAN transceiver, analog measurement and logic I/Os with signal conditioning circuitry. The main controller handles all the calculations, and communication with other sub-blocks. The main controller's vehicle interface consists of an automotive style Ampseal 35 pin connector. Two analog (NTC thermistors) temperature sensors, speed sensor and various inputs/outputs are interfaced via this connector.

The shunt measurement PCB contains physical shunts, isolated HV DC-DC converter, measurement circuitry converting battery voltages² and charging/discharging currents in digital form and a line encoder driving fiber optic transmitters. Data transmission to the main controller and optional BMS is implemented via a fiber optic cable allowing exceptional noise immunity as well as safety. The shunt measurement PCB³ is equipped with a HV (High Voltage) battery connector and LV (Low Voltage) connector used to feed power to the main controller, HMI and LED display. The shunts must be rated for the continuous average current to be measured. Please note that electrically shunts can be overloaded up to 2.5 times without losing accuracy of measurement (e.g 200 A shunt will handle 500 A current measurement), however shunts will not tolerate long overload thermally.

¹ If external display is installed onto a dash board under wind shield, make sure it is protected from excessive heat. Use optional plastic hood for better visibility with bright ambient light.

² Full and half (center tap) battery voltage connections are required for halves comparison function to work.

³ Consult the factory about connecting your BMS to the EVision to take advantage of EVision's accurate voltage and current measurements circuits.

The hardware supplied (continued)

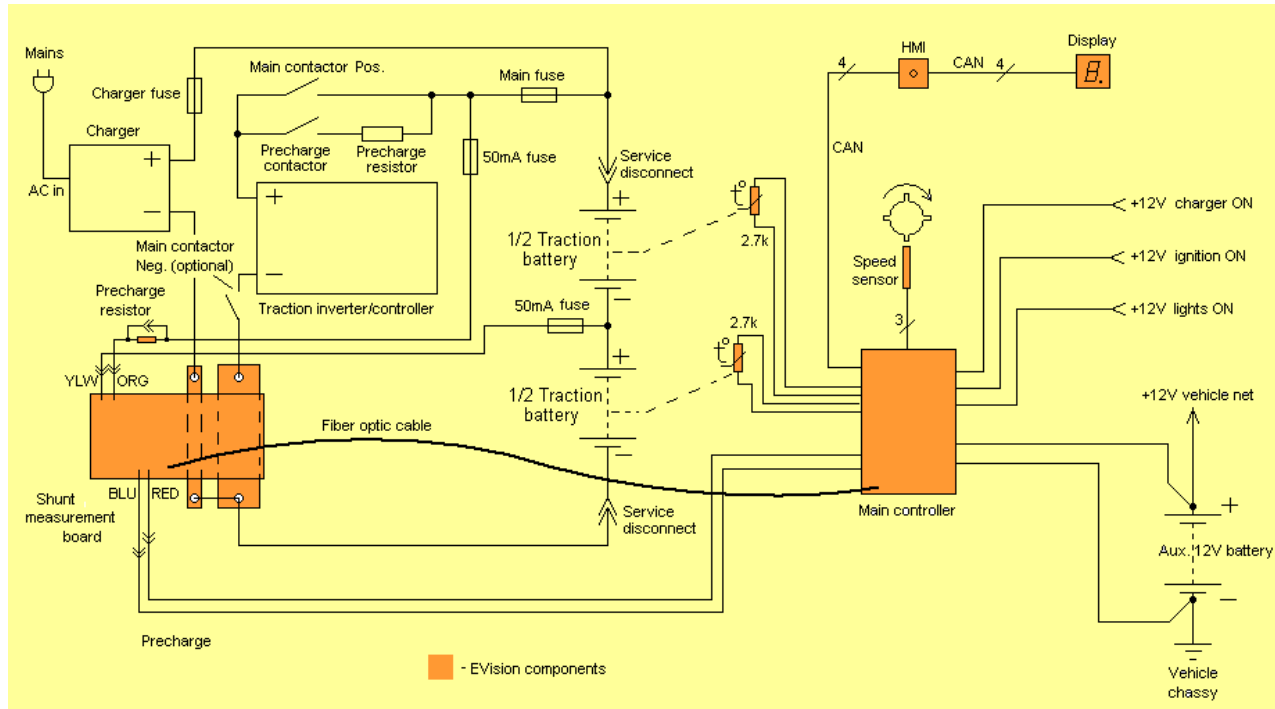
For this example it means if your drive system draws 150A from traction battery on average but has excursions during accelerations up to 400 A, a 200A shunt will be appropriate choice here for as long as current more than rated 200 A are not exceeded for a long time. "Long time" can be defined as 10-20 seconds to few minutes - depending on the degree of overload and cooling conditions. The higher overload and more limited cooling, the shorter time duration is allowed; the goal is to prevent overheating of the shunts. Charging normally has no current excursions so if your battery charging current exceeds 40 A, you must use 100 A charger shunt.

The HMI unit controlling EVision is a physically separate unit that allows controlling of a display remotely. Therefore it can be mounted in any location within easy reach and away from the display unit. The HMI block consists of a rotary encoder combined with a push button, CAN I/O handler IC, CAN transceiver, few LEDs, a buzzer, the connector for optional "favorite" buttons and the terminal blocks to connect to the rest of the system.

Supplied speed sensor is Hall-effect based detector with integrated permanent magnet and line driver circuit. It registers presence of ferrous material (gear teeth like) moving in close proximity to its sensing tip. No moving magnets required.

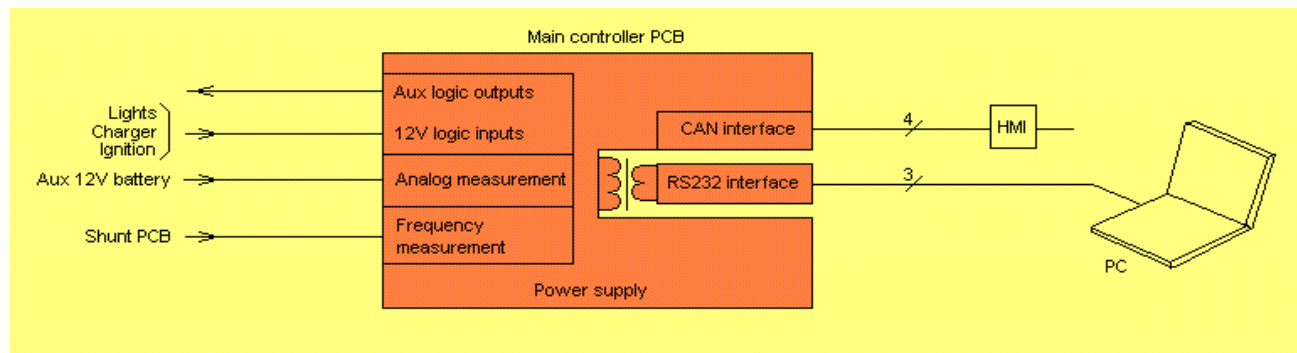
The hardware supplied (continued)

Representative diagram of the EVision system integration is shown below. Supplied components are shown in darker amber color. Note: Connection of non-EVision components (fuses, contactors) on this diagram are shown as working example only; your implementation of these components does not have to follow it.



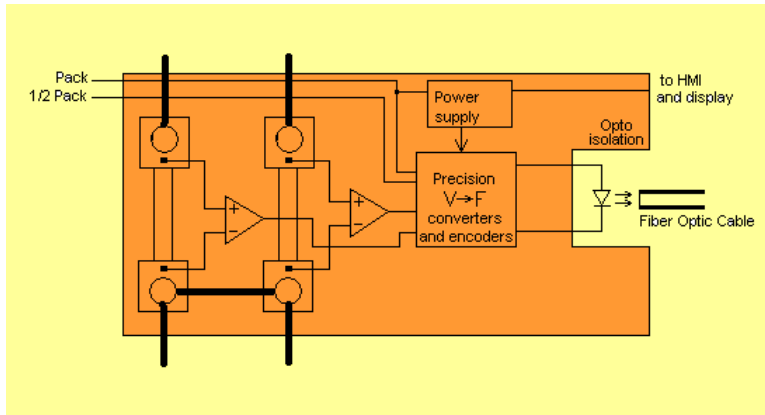
The hardware supplied (continued)

Representative diagram of the main controller PCB:

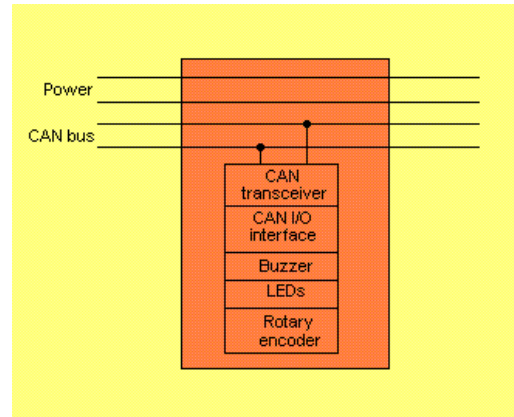


The hardware supplied (continued)

Representative diagram of the shunt measurement PCB:

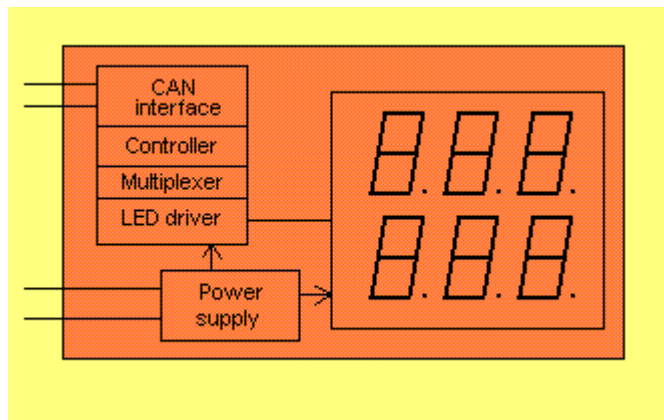


Representative diagram of the HMI PCB



The hardware supplied (continued)

Representative diagram of the display PCB:



Main controller interface 35 pin Ampseal connector pinout

Pin number	FUNCTION	Pin number	FUNCTION
1	Temp. sensor 2 low	19	- Out2 Power Steering Pump control*
2	Temp. sensor 2 high	20	+ Out2 Power Steering Pump control*
3	Temp. sensor 1 high	21	No connect
4	Charger ON	22	No connect
5	Aux2	23	RS232C IN (DB9 pin 3)
6	Speed sensor	24	+ Power IN (System Power +7.5V)
7	Aux1	25	+ Power OUT (System Power +7.5V)
8	- Out1 Charger enable	26	CANH
9	+ Out1 Charger enable	27	CANL
10	No connect	28	CL30 Kelvin (direct to +12V Aux battery)
11	RS232C GND (DB9 pin5)	29	CL31 Kelvin (direct to -12V Aux battery)
12	RS232C OUT (DB9 pin2)	30	CL15 (Ignition ON)
13	- Power IN (System Power return 0V)	31	No connect
14	- Power OUT (System Power return 0V)	32	No connect
15	Temp. Sensor 1 low	33	No connect
16	Speed sensor GND	34	No connect
17	Speed sensor PWR	35	Chassy noise reduction (option).
18	Night dimming (Lights ON)		

Inputs are listed in blue font color

Outputs are listed in red font color

All other I/Os and power connections are listed in black font color

* OEM option only

Shunt measurement PCB

Pin number	FUNCTION	Connector type, wire color
1	Traction pack voltage, most positive	Tyco, ORG
2	½ of traction pack voltage, (center tap)	Tyco, YLW
A	System Power +7.5V	Delphi, RED
B	System Power return 0V	Delphi, BLU

HMI PCB connector wire color specification*:

PCB label	Function, wire color
PWR	+7.5V power, RED
GND	Power return, BLU
CANH	CAN bus high, ORG
CANL	CAN bus low, BLK

* Either of two terminals designated for the same wire color can be input or output. Both terminals of the same color are electrically connected together providing pass-through connectivity.

LED Display wire color specification:

Function	Wire color
PWM output*	WHT
+ Power	RED
- Power return	BLU
CAN bus high	ORG
CAN bus low	BLK

*Use of PWM output to drive stock fuel gauge to show traction battery SOC is optional. Cut off this wire if you don't intend to use stock fuel gauge as SOC indicator.

Speed sensor wire color specification:

Function	Wire color
+ Power	TAN or RED
- Power return	BLU
Sensor output	BLK

HMI block PCB “favorite” buttons connector specification¹:

PIN number	Function
1 (square pad)	Favorite page 1 button
2	Favorite page 3 button
3	Favorite page 2 button
4	Common for all buttons

¹ Favorite buttons connection is optional.

Interfacing to EVision

All digital inputs accept +12V as logic 1. They are meant to be used in common standard automotive 12V electrical system (actual range is 10.5...15V DC) and protected against short transient voltage spikes. Inputs will withstand about 25VDC of either polarity continuously without damage.

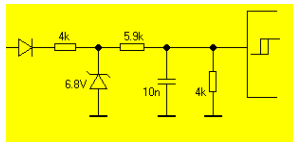
By an accepted in automotive industry signal naming convention, vehicle interface signals are named accordingly:

CL15: to +12V after ignition key ("Ignition ON")

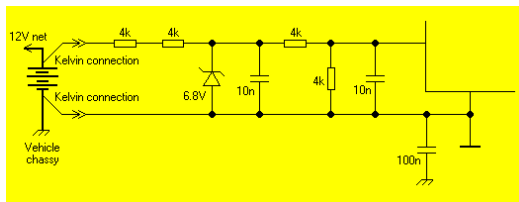
CL30: to +12V, directly to the battery.

CL31: to -12V, directly to the battery (normally vehicle chassy). Note: Pin 29 of the main controller must be connected to -12V directly at the battery terminal, not to the vehicle chassy.

Digital inputs interface circuit:



Analog input interface circuit (Aux. 12 V battery voltage measurement):

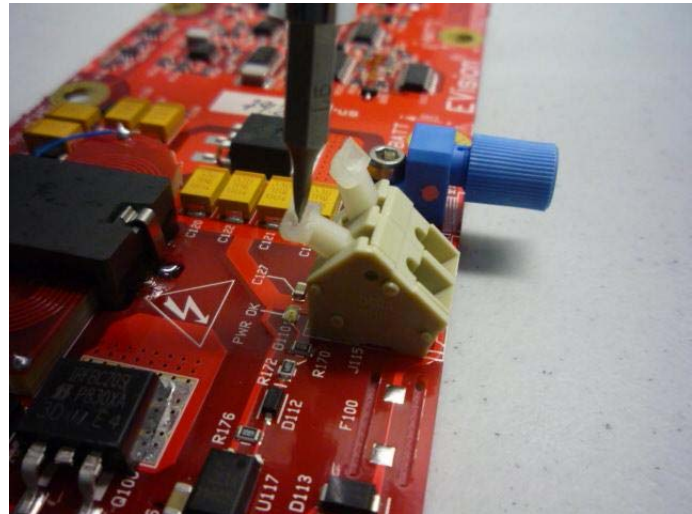


Installing and setting up EVision.

Important note: single wire interface connectors between EVision PCBs are clamp cage type. While opening the clamp by moving lever with small screwdriver or fingernail prior to inserting bare wire, support back of the connector to avoid bending PCB and thus stressing surface mount components. This is especially important for +HV and -HV connectors on the main controller PCB and components next to the planar transformer.

HMI PCB is equipped with clamp cage solderless connectors for two reasons:

- You don't need to mount mating connectors on the end of a wire and can cut it to any desirable minimal length to reduce resistance and noise.
- Unlike screw terminals, spring loaded clamp cage terminals always put consistent pressure on a wire, can be mounted without any tools, and once wire is connected, unlike screw terminals clamp cage connector has no chance to get loose. Connectors will accept bare solid or stranded wire. Strip insulation to expose 5-6mm (0.25") of the conductor. Open the clamp by pressing on the lever with finger nail or flat blade small jewel screwdriver, insert the wire and release the clamp. That's it. It is not necessary to twist exposed stranded wire end, tin it or crimp ferrule over it prior to insertion.
- Connection of a wire can be done very quickly, no need to hunt for a slot in a screw, no chance any parts can get lost (like screws in case of screw terminal).



Installing and setting up EVision (continued)

Minimum hardware configuration consists of four sub-blocks: shunt measurement PCB, main controller PCB, HMI and display. All EVision sub-blocks (except for shunt measurement PCB) handle data traffic via CAN bus. The shunt measurement PCB transmits data to the main controller PCB via fiber optic cable.

- Pick location for the main controller. Mounting orientation of the main controller is not critical; however avoid close proximity to the battery cables and other high noise level conductors. Optional machined plastic enclosure (as shown below) is highly recommended as 35 pin Ampseal connector requires high force to plug in and there are no means to attach main controller PCB to any surface other than using its connector's flange. Convenience of routing wiring harness to and from the main controller should be considered for optimal physical placement. There are no serviceable parts inside and the only event user should access the main controller is to monitor internal LEDs for troubleshooting and to provide global reset¹.



- Pick location of HMI block on the dash or central console within convenient reach. Control of the EVision operation is achieved solely by only one knob on the rotary encoder with a push-button. Only Power and CAN bus connection is required to interface HMI block with the rest of the system.

¹ Global reset re-initializes all variables to the factory pre-set values and wipes out any stored historical data such as total charge cycles counter or hardware related data such as speed sensor pulses/rev amount, shunt value, voltage and temp. limits, PWM settings, etc.

Installing and setting up EVision (continued)

Note: Since electrically HMI must tap the CAN bus, the HMI interface connects inline with 4 wire harness. This means 4 wires go in, make contact with HMI and come out (8 wires total). It is possible to have a spur off the bus (no longer than ~30 cm) in which case only 4 physical wires will be connected to the HMI connector block (either side). Remaining 4 terminals in this case will be unused. Wire color is silk screened on the HMI PCB.

- Choose location for the display unit. Globe display is installed on dash or A pillar while internal in-dash display is typically integrated into the stock instrument cluster. A wire harness permanently attached to the display has standard length 1m and in case it cannot reach HMI block, can be extended.
- Connect display harness (4 wires, see color table) to the HMI PCB using its clamp cage terminal connectors. Shorten the harness as needed. Wire color next to each connector is silk screened on the PCB.
- Connect HMI block to the main controller using supplied 4 wire harness. There are two terminals for each color, they are connected together so there is no “input” or “output” side of the HMI.
- Connect + and – of the auxiliary 12V battery to the main controller.
Note: This is Kelvin connection. While negative terminal of the auxiliary battery is typically connected to the vehicle body, grounding -12V wire from the main controller instead of running dedicated wire directly to the negative terminal of 12V aux. battery will inevitably introduce an error to its voltage measurement. Always use dedicated wires going from the main controller directly to the auxiliary battery terminals.
- Connect the rest of the inputs/outputs of the main controller PCB according to the pinout in the table on page 18.
- Connect one or both temp sensors (included 2.7k NTC thermistors) to the main controller PCB. Having temp sensors is optional. Mount each sensor in any two places expected to have highest temperature you want to measure. Use pair of twisted wires, they don't have to be shielded.
- Connect speed sensor. Having speed sensor hooked up is optional, however without it some functions related to distance or speed will not be available (speedometer, odometer, Wh/mile or Wh/km drive efficiency, DTE range estimation, etc).

Installing and setting up EVision (continued)

- Mount shunt measurement PCB. Since the shunt is inserted in the negative battery cable, attempt to place the PCB in the former path of negative battery cable to minimize extra length of the cable. The main shunt has threaded mounting holes and is expected to be mounted on insulating base. The charger shunt does not require own support. However, the measurement PCB does requires its support through two mounting holes marked as M4 (which is the size of the mounting post or screw thread). Note that the measurement PCB CANNOT rely to be held in place by being bolted only to the main shunt – the weight of the charging shunt, its cable and planar transformer will cause excessive vibration of the PCB, loosen planar transformer and premature failure of the power supply. It is mandatory to support at least one corner of the left side of the shunt measurement PCB with metal or plastic stand-offs or supporting brackets.

Note: shunts become warm during normal operation and power supply components may become hot. Therefore make sure the shunt measurement PCB has adequate cooling. The shunt PCB comes without its own enclosure as it is intended to be mounted either inside the main contactors box or in the power distribution box with enough air circulation for convection cooling. Should you choose to install this PCB in a small individual enclosure, DO NOT use sealed enclosure that does not have ventilation holes or forced air cooling. Best option is to install the unit in a way of adequate air flow or use small muffin fan (sold as a CPU cooling fan) for forced air cooling.

- Interconnect the shunt measurement PCB and the main controller with fiber optic cable. If it is necessary to cut the cable to a shorter length, place cable on a piece of wood and make a straight cut with a sharp knife in one motion. DO NOT use side cutters to cut fiber optic cable. Loosen plastic barrel and insert fiber as far as it will go (about 16mm)
- Link both bottom terminals of both shunts with flat strip of copper or a wire jumper. The cross-section of the link should be adequate to pass maximum charging current.

Installing and setting up EVision (continued)

- Connect traction current shunt in series with the traction battery. If the vehicle is already equipped with shunt installed in the negative cable of the traction battery, replace it with EVision provided shunt or connect EVision shunt in series. The top of the shunt must be connected directly to the most negative terminal of the traction battery. If the vehicle does not have any instrumentation and the power cable from the negative terminal of the traction battery is connected directly (or through the contactor) to the traction controller or inverter, this cable must be cut and resulting cable ends fitted with crimp-on ring terminals. Diameter of the ring hole depends on the supplied shunt type.

ATTENTION: As indicated by silk screening, even though traction and charging shunts are connected by a copper trace, you **MUST** link both these shunts externally with a wire jumper or braded grounding strip with enough crosssection to handle maximum charging current. If rigid link is used, make sure it is flat and placed directly on top of both shunts to avoid warping the PCB. Failure to perform this step will cause PCB copper trace to overheat during charging and in case of high charging currents - to burn out. Such failure is hazardous as may lead to melting insulation of near by wiring, further causing electrical shorts and possibly a fire. User assumes and accepts full responsibility for the consequences of not following this step. You also should connect the lug of the cable coming from the negative terminal of the battery directly to the larger (traction) shunt and make a link from this connection to the smaller (charging) shunt, not the other way around. Not following this requirement may introduce large error in driving and regen current measurement.

- Connect charger negative DC output in series with charger shunt.

Prepare a yellow wire (not supplied) with enough length to extend from electrical middle of the traction pack to the shunt measurement PCB. Install inline 20...100 mA DC rated fuse. This type of fuse is used in hand held multimeters. At the end of wire insert supplied wire seal, crimp supplied contact terminal and insert it into

Installing and setting up EVision (continued)

- contact 2 of Tyco connector according to specification on page 19. The wire cross-section is around 1.5mm² (AWG gauge 20...18). Do not connect the other end to the traction battery yet.
- Prepare a red wire (not supplied) with enough length to extend from the most positive terminal of traction pack to the shunt measurement PCB. Install inline 20...100 mA DC fuse. Leave precharging resistor (inserted into the orange wire coming from HV connector and fitted with shorting jumper wires) electrically inline, e.g. do not connect jumpers together yet). Once EVision is working, the only time you will ever need to break shorting loop around precharging resistor is if you ever disconnect EVision from the traction battery for battery maintenance. Normally EVision is powered at all times. Insert the supplied wire seal on the end of the wire, crimp the contact terminal and insert it into contact 1 of supplied Tyco connector according to specification on page 19. Do not connect the other end to the positive terminal of the traction battery yet.

You can use representative schematic on page 14 as a reference for all the connections, but your particular configuration will depend on whether you have one or two main contactors, reversing contactors (for DC system), on your particular precharging circuitry configuration, etc.

There are no power switches as EVision must be powered up at all times to track energy consumption while idling and to retain valid date/time set up in RTC. When the vehicle is idle, display enters sleep mode reducing power consumption from the traction battery, but it remains fully functional and tracks idle energy consumption at all times. Display wakes up and serial connection activates on any user input such as ignition on, lights on, charger on, button press, etc. Proper hook up sequence is: While in sleep mode, purple “EVision” logo at the bottom of display is illuminated indicating that the traction battery is live and connected.

At this point the proper sequence of powering up the unit is:

- Mate low voltage Delphi connector (red and blue wiring).

Installing and setting up EVision (continued)

- Connect orange wire from HV connector to the positive terminal of the traction battery.
- Mate HV power connector. EVision will precharge and turn on. Display will wake up and turn on. Depending on the status of digital inputs it may stay on or will go to sleep within 30 seconds.
- Short out precharge resistor by mating terminals of jumper wire.
- Connect yellow wire to the electrical middle of the battery pack.

EVision is ready for operation.

Installing and setting up EVision (continued)

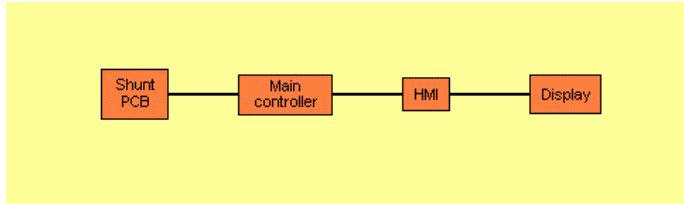
Should you need to disconnect the instrument, just unplug HV connector. Then disengage the jumper terminals around precharge resistor. You can leave orange and yellow wires connected to the traction battery. To reconnect the instrument, just plug HV connector and short the precharge resistor with its jumper wires. The mid pack connection does not require precharging.

ATTENTION: if for whatever reason EVision loses main power, you must precharge the circuit every time you connect traction power to the HV connector, and observe the required sequence of powering up as described on the page 27. Failure to comply with this requirement will result in too fast voltage rise at the moment you connect EVision directly across high voltage battery and this may damage power supply IC. Such damage has distinctive signature and is not covered by manufacturer's warranty.

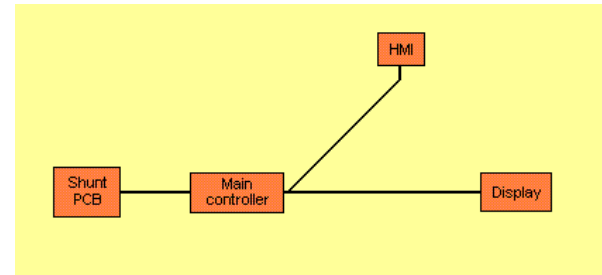
You can use representative schematic on page 12 as a reference for all the connections, but your implementation depends on the controller/inverter type, contactor type, etc and will vary.

If there is no active signal on any input of EVision, it will enter power saving sleep mode after 5 seconds of inactivity. Data streaming via serial port will cease until display is woken up. However, EVision will keep track of Ah in or out of traction battery while in sleep.

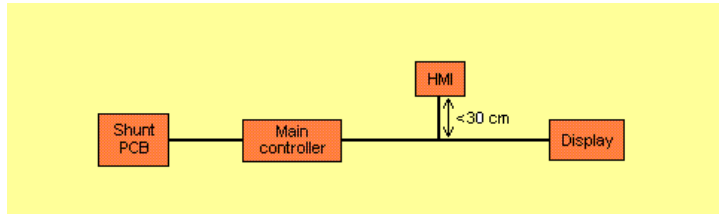
Installing and setting up EVision (continued)



Preferred proper way of connection



Wrong way – long spur (>30 cm) off CAN bus is not allowed.



Acceptable way (short spur and splice to CAN bus)

Installing and setting up EVision (continued)

To enhance a readout for external display under bright ambient light, a visor or small hood is recommended:



*E*Vision operation

There are 2 modes of operation of *E*Vision:

- Running mode
- Set up / firmware download mode

After powering up and initializing *E*Vision defaults to the page 1 display. Keep in mind that if no active input signals are present (IGNITION ON or CHARGING ON), the system enters sleep mode 30 seconds later. If the system was powered up already and ignition input and charging input went inactive, *E*Vision goes to sleep 5 seconds later. Communication via serial port while in sleep is ceased and is not possible. You can wake up the unit to check out values without ignition or charging signal by pressing HMI button.

As factory default, page 1 simultaneously shows full battery voltage on the upper digital display, battery current on the lower digital display and the state of charge on the 25 segment analog bar. There are 20 pre-defined pages user can select by rotating HMI knob. **All** measurable parameters are internally tracked and outputted via serial port in real time, user only selects which 3 parameters are being displayed as a group per page. All default pages are user definable: any 3 parameters can be assigned to each of 20 pages to suit your preferences¹. Once set up, pages contents is stored in non-volatile memory² so next time *E*Vision wakes up you only have to choose which page to display by scrolling through them rotating HMI knob CW or CCW. Optionally you can recall first 3 pages using three “favorite” buttons connected to the HMI PCB.

¹ You should only select combination of parameters that have corresponding units next to respective displays. For instance you should not choose battery current on upper display and vehicle speed on lower display on the same page since unit symbols for both of these parameters (“A” and “km/h”) are located next to lower display. If you configure unit this way, numerical Amperes value will be displayed correctly on the upper display and speed on the lower display, but both “A” symbol and “km/h” symbol for units will lit next to lower display only.

² If you press global reset button on the main controller, factory defaults will get restored, including favorite pages. You will have to redefine your own pages over again.

EVision operation (continued).

To change displayed page simply rotate HMI knob SW or CCW. Each click selects next or previous [pre-defined] page. After waking up from sleep mode it may take up to 4 clicks of HMI encoder button in any direction to re-sync the encoder. The page number WILL NOT advance during re-synchronization; this is not a malfunction.

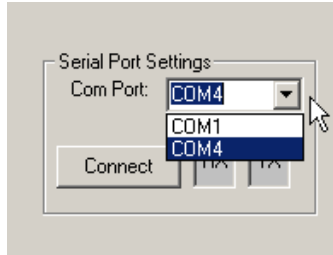
Currently initial configuration of display pages for later selection is only possible via serial port from a PC.

The serial port is PC standard RS232C port with communication parameters fixed to 19,200 baud, 8 data bits 1 stop bit, no parity, no flow control. If a PC does not have RS232C serial port, communication is possible with any standard USB to serial adapter. In this case comm. port number you select in GUI has to match serial port number Windows has assigned to the USB adapter (check Device Manager). Alternatively, any terminal program can be used, such as HyperTerminal for PC platform running Windows or z-terminal for Macintosh platform. Once a PC is connected to EVision and communication established, pressing "0" (zero) key ten times invokes built in upload/download utility. Setting up Display and SOCM parameters consists of downloading configuration file to a PC, modifying its contents and uploading back to EVision. However, be advised that manual editing of the config. file is somewhat involved and is not recommended.

The supplied EVM (Electric Vehicle Monitor) program has GUI that is used to configure EVision and upgrade its firmware. See contents of included CD-ROM disc. Latest documentation and firmware can always be downloaded from Metric Mind Corporation web site and may supersede version available at the time of CD release.

EVision operation (continued)

To establish serial connection, choose from drop down list the port number EVision is connected to, see picture below:



After clicking “Connect” button communication will get established, data start scrolling through the terminal window and running parameters in GUI will get populated with live data.

Enter System set up mode (View -> Main Controller set up or View ->Display setup). In this window you set shunts values, wheel diameter, default efficiency (in case no speed sensor used), alarms limits and other parameters. See main controller configuration GUI overview on page 35 and display controller – on page 38.

EVision operation (continued).

GUI interface overview. Main page

The screenshot displays the EVision Monitor software interface, titled "EVision Monitor [CONNECTED COM4]". The interface is organized into several functional panels:

- Logic Signals:** A row of status indicators for "IGNITION", "LIGHTS", "CHARGER", and "PS PUMP". "IGNITION" and "CHARGER" are highlighted in green.
- System Alarms:** A row of indicators for "Over Voltage", "Under Voltage", "Over Current", "Under Aux", and "Temperature".
- Quick Values:** Displays Pack Voltage V (+298.06 V), Upper Half Pack Voltage V (+149.66 V), Lower Half Pack Voltage V (+148.40 V), Pack Halves Delta V (+1.26 V), Charge Current A (-0.13 A), Discharge Current A (+0.00 A), and Pack Power kW (+0.00 kW).
- High Resolution Values:** Displays Pack Voltage V (+285.96 V), Upper Half Pack Voltage V (143.82 V), Lower Half Pack Voltage V (+142.14 V), Pack Halves Delta, V (1.68 V), Charge Current A (+0.00 A), Discharge Current A (+0.00 A), Declared SOC % (+100.00 %), Ah Used (+0.50 Ah), and Remaining REAL Capacity Ah (+0.50 Ah).
- Vehicle Efficiency and Statistics:** Displays Vehicle Speed (0.00 MPH), Wh/mi (0.00), mi/kWh (0.00), Distance to Empty (0.00 mi), Odometer (6.5 mi), and Trip Odometer (0.0 mi).
- Analog Values:** Displays Aux Voltage (+14.36 V), Temperature 1 (75.2 F), and Temperature 2 (75.2 F).
- Serial Numbers:** Displays SOCM: 16 and DD: 16.
- Software Version Numbers:** Displays SOCM: V5.5, DD: V3.1, and BB: V255,255.
- Charge Cycle Counter:** Displays Full Cycles: 18.
- EVision Date and Time:** Displays Date: Jul-26-2010, Time: 21:50:23, and an "Update Date and Time" button.
- Serial Port Settings:** Displays Com Port: COM4, "Disconnect", "RX", and "TX" buttons, and Version: 7/13/10 (V25).
- Serial Data:** A text area showing raw data streams such as <RX> \$CV,21:50:22,Jul-26-2010,10,+285.96,+142.14,+0.00,+0.00,+0.00,+0.50,+100.00,+9.94,18.

At the bottom center, there is a large purple button labeled "MMC" and a "Close" button to its right. A blue arrow points from the text "Live data - can be captured to a file" to the Serial Data panel.

EVision operation (continued).

GUI interface overview. Main controller configuration page

The screenshot displays the 'EVision Settings and Configuration' window, which is organized into several functional panels:

- Main Shunt Value:** A dropdown menu is set to '100'. A blue annotation reads: "Shunt selection, must match physical shunts installed".
- Charger Shunt Value:** A dropdown menu is set to '40'.
- Max Battery Voltage:** Two radio buttons are present: '< 450 VDC' (selected) and '> 450 VDC'.
- Energy Settings:** Includes 'Est Energy Consumption (Wh/mile):' set to '250' and 'Averaging Time for Energy Consumption Calculation (min):' set to '2'. A blue annotation states: "In effect only if no speed sensor is connected" and "Always In effect".
- Display Units:** Radio buttons for 'Metric' and 'Imperial' (selected).
- Charger Settings:** Under 'At the end of Charge:', radio buttons for 'Dpto ON' and 'Dpto OFF' (selected). A blue annotation reads: "Optional external connection for charger".
- Battery Pack Capacity:** 'Rated Total Pack Capacity Ah:' is '50' and 'Declared Usable Pack Capacity Ah:' is '30'.
- Speed Sensor and TPM Setup:** Includes 'Pulse Count Per Rotation:' (10), 'Tire Diameter (mm):' (600), 'Differential Gear Ratio:' (1), and 'Minimum Tire Pressure (PSI):'.
- Misc.:** 'Odometer:' field.
- External hardware required:** A blue annotation pointing to the 'Minimum Tire Pressure (PSI):' field.
- EVision System Alarms:** A vertical stack of sliders for: 'Over Voltage: 400V', 'Under Voltage: 100V', 'Pack Halves Difference: 0V' (with a blue annotation: "Setting to '0' disables this function"), 'Over Current: 500A', 'Under Aux Voltage: 10V', and 'Temperature Alarm: 122 Deg F'.
- Power Steering Pump Control:** A graph showing 'Assist level' (0% to 100%) vs 'Vehicle Speed' (0 to 37 mph). The graph is divided into 'Pump ON' (0-9 mph), 'Ramp Up/Down PWM' (9-37 mph), and 'Pump OFF' (>37 mph). A red annotation reads: "The power steering control function is available for OEM only". Below the graph are options: 'At 0 mph: Keep ON' (selected) and 'Turn OFF after 25 seconds'.
- Buttons:** 'Write EVision Settings', 'Read EVision Settings', 'Set Factory Defaults', and a large purple 'MMC' button.

EVision operation (continued).

While configuring your EVision, please keep in mind following points:

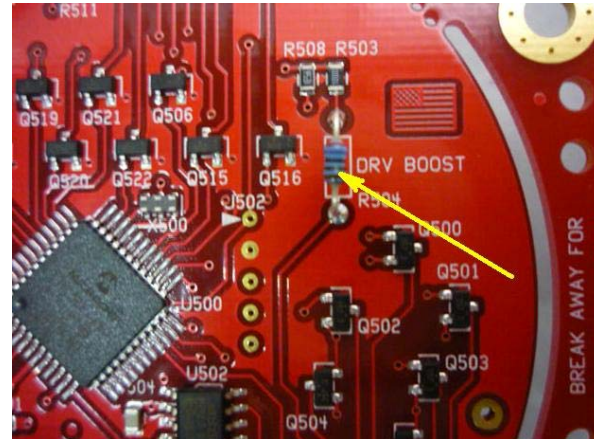
- “Max. Battery Voltage” selection must match option supplied (selected on the shunt measurement board). If traction battery voltage exceeds 450VDC at any time, “HV” option must be activated. Contact MMC tech. support for assistance.
- Declared usable pack capacity must not exceed total rated capacity. See appendix for definitions.
- Total Charge timer is safety feature in addition on any timers your charger might have. After preset amount of hours elapse, opto coupler changes state to the opposite from its preconfigured default state during charge. You can use this coupler to control a relay (solid state relay preferred) to disconnect your charger from the mains.
- “CV time to full” value is amount of hours between the time the bulk charging is completed (charging transitions from CC to CV mode) and end of charge time. CV mode is assumed to start at 75% SOC. CV time depends on your battery model and has to be calibrated once (observed and inputted here). This amount is always constant and is not dependent of the running SOC.
To estimate TTF (Time To Full) the charger will compute amount of time needed to complete bulk charging e.g. reach 75% SOC (based on present SOC and rate of charge) and will add CV time you define in GUI. Should you interrupt charging during CV mode, re-plugging charger back will initialize TTF to CV time even though CV time was partially completed. EVision does not keep track how long CV mode lasted before interrupted, so accurate TTF estimation under these circumstances is not possible.
- “Ah reset threshold” is in effect only if some amount of deliberate overcharge is allowed and actually takes place. If the SOC is 105% (you deliberately put in 5% more Ah than you spent since last full charge so the amount of Ah spent shows negative), as soon as you start driving and battery current exceeds defined here value, SOC meter resets to 100% and Ah spent – to zero. You also can always initialize EVision to this condition by pressing and holding down HMI button for about 5 sec (until you hear beep).

EVision operation (continued).

- For the speed sensor – do not output more than 2 pulses per rev of the shaft if rotation speed is more than about 2000 RPM. For a wheel shaft typical rotation speed (at freeway vehicle speed) does not exceed 1000 RPM so you can use 4 pulses per rotation. For slow shafts, to increase accuracy at very slow speeds, output 6...8 pulses per revolution. For direct drive vehicles you can install speed sensor on the motor shaft instead of the wheel shaft. In this case fill in differential R&P (final drive) gears ratio.

On the display configuration page, besides pre-configuring pages, you can set amount of display dimming in night mode. Drag the slider left or right and write settings to EVision. Experiment with different settings. Dimming occur when “Night” control input of the main controller receives +12VDC. This is easily accomplished by connecting this input to the vehicle’s side marker light bulb.

You can drive stock fuel gauge with EVision – this will resemble familiar FULL - EMPTY readout of the fuel gauge corresponding to 100%-0% SOC of your traction battery. The fuel gauge movement must be of electromagnetic type (mA meter), not stepper motor drive. Max current EVision can supply is about 30mA. Initial (“E”) and final (“F”) position of the gauge pointer can be finely set up by adjusting PWM of the gauge driver in GUI – drag sliders left and right until E and F pointer position match 0% and 100% SOC respectively. In case there is no enough current to make pointer display “F” even at 100% PWM, you can short out current limiting resistor marked “DRV BOOST” on the display driver PCB. This resistor is the only through hole component mounted for that reason.



EVision operation (continued).

GUI interface overview. Display configuration page

MMC

Display Driver (DD) Configuration

Display Page
Page: 1

Upper Display
Volts

Lower Display
Amps

Bar Graph Display
%SOC

Apply

Lights-On Display Dimmer
Min Dim Max Dim
Setting: 1

Page No.	Upper 7-Seg Display	Lower 7-Seg Display	Bar Graph Display
1	Volts	Amps	%SOC
2	Wh/Mile	kw	%SOC
3	Temperature (Deg F)	Trip Odometer	Balance
4	Ah	DTE	%SOC
5	Volts	kw	%SOC
6	Volts	Amps	Balance
7	Ah	Amps	%SOC
8	Wh/Mile	Amps	%SOC
9	%SOC	Miles/KWh	Amps (Log Scale)
10	kw	Amps	%SOC
11	kw	DTE	Amps
12	Wh/Mile	MPH	%SOC
13	%SOC	Amps	Volts
14	Volts	Miles/KWh	Amps (Log Scale)
15	Volts	Aux 12V	%SOC
16	Ah	TTF (Time To Full)	%SOC
17	kWh	TTF (Time To Full)	%SOC
18	%SOC	kWh	%SOC
19	kWh	DTE	%SOC
20	Odometer	Odometer	Odometer

Analog Fuel Gauge Driver PWM Setting
Max PWM: 100% Min PWM: 1%

Set Default Display Page Settings Read Display Page Settings Write Display Page Settings

EVision operation (continued).

If factory default settings need to be restored, press and hold reset button on the main PCB (not HMI PCB) for 5 sec.

Warning: all historical and vehicle related data such as preset battery capacity, cycle counter or wheel diameter will be lost and reset to the factory default values.

Note: The analog bar does not display units symbol associated with parameter being displayed. Typically analog bar is used to show relative SOC (0...100%), but if you choose to use the bar on some pages to display other parameter such as instant power or efficiency, you will have to remember your choice.

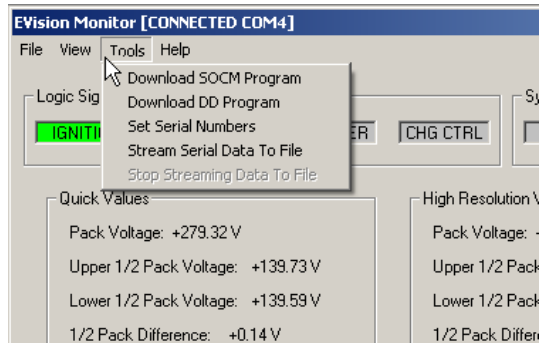
Upgrading firmware

We constantly work on the improvements of the instrument and new firmware releases are periodically posted on the Metric Mind Corporation web site (<http://www.metricmind.com/evision.htm>) free of charge. You can download new version and upgrade your EVision. You will need to connect your PC's serial port to the board you're upgrading (main controller or display). If your PC is not equipped with serial interface port, you can use common USB-Serial adapter.

Both, main controller PCB and Display PCB, are equipped with serial interface, however only main controller has physical harness and DB-9 serial connector. User is not expected to upgrade display controller since instrument functionality is solely determined by the firmware running in main controller. The display firmware only contains LEDs multiplexing and CAN handling routines and will not affect functionality. In case relevant display update becomes available, please contact Metric Mind Corporation support desk for assistance connecting display PCB for the upgrade.

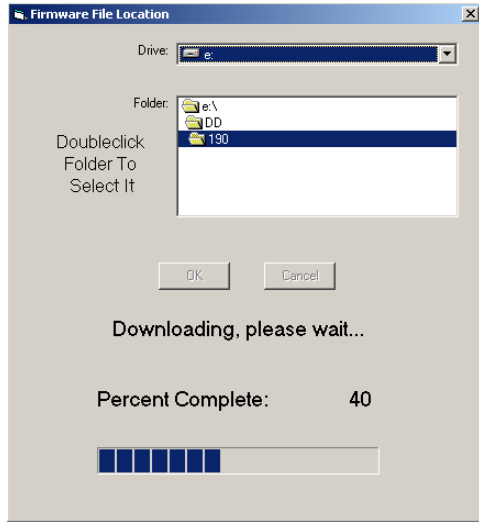
The serial communication parameters should be set to 19200 baud, 8 bits, no parity check, 1 stop bit, no flow control. In supplied EVision GUI go to Tools menu and select the Main Controller or Display as shown on the next page.

EVision operation (continued).



Navigate to the folder containing the firmware file, and while serial port is connected, click OK. (Note - you have to double-click on the folder name containing firmware to actually open it for GUI to search for the firmware file. Single click will highlight the folder, but will not open it, GUI will not be able to find the file and upgrading will fail.) Upgrading will start:

EVision operation (continued).



Once download is completed, EVision will reset and new firmware will take effect.

Note: Do not attempt to use in-circuit debugger to access the firmware directly through ICSP pads – this is for factory use only. The firmware has been written to be upgradable through the serial interface only. Any attempts to read protected the contents of the memory will corrupt the bootloader preventing unit to initialize and thus rendering it inoperable. Repair of units subjected to direct memory access via ICSP can only be done at the factory by re-flashing the program memory. This condition has distinctive signature and is not covered by the manufacturer's warranty.

EVision operation (continued).

Capturing and saving live data to a file.

The serial interface continuously streams out all measured and computed data whether acknowledged/captured or not. Exception is sleep mode when data streaming is suspended to reduce energy consumption.

Output data format conforms to NMEA standard, which essentially is plain human readable strings of ASCII characters where each string has identifiers and few other fields. This makes it easier to align, sort and plot captured data once it is imported into a spreadsheet program such as Microsoft® Excel or similar.

A sample of EVision output is shown below:

```
.....  
$RV,23:17:22,May-28-2007,611,+0.00,+9999.99,+0.01,+0.11,+0.12  
$IV,23:17:23,May-28-2007,612,+356.36,+177.24,+0.00,+1.10,+0.30  
$RV,23:17:23,May-28-2007,612,+0.00,+9999.99,+0.01,+0.11,+0.12  
$CV,23:17:23,May-28-2007,152,+356.93,+177.23,+0.00,+1.12,+4.09,+86.00,+1.00,0  
$AV,23:17:23,May-28-2007,152,+14.20,-26.62,-28.46,1,1,0,0,0,0,0  
$SV,23:17:23,May-28-2007,15,3,5,1,3,255,255,255,255,255,255,255  
$IV,23:17:23,May-28-2007,613,+356.39,+177.18,+0.00,+1.07,+0.30
```

Refer to the information on the web site for detailed format and field's definition:
<http://www.metricmind.com/evision.htm>

Specifications

Absolute maximum traction battery voltage range	60...800V continuous, 900 VDC peak
Auxiliary battery voltage range measurement	0...16 V
Traction Battery drive/regen current measurement	+/- 0.1...4,000 ADC (with right rating shunt)
Traction Battery charging current measurement	+/- 0.1...100 ADC (with right rating shunt)
Traction Battery capacity measurement	0...999 Ah
Traction Battery energy storage measurement	0...999 kWh
Traction battery power measurement	+/- 0...650 kW
Traction Battery SOC measurement	0...125%
Digital inputs voltage	+10.5...16 VDC
Temperature measurement	-18°C...+75°C, (0°F...+75°F)
Charge cycles counter	65,536 cycles
Energy efficiency (computed)	0...999 Wh/mile (Wh/km)
Power consumption from the traction battery	5.25W (15mA @ 350VDC) in operating mode, 3.15W (9mA @ 350VDC) in sleep mode
Basic accuracy	1% of top scale
Digital displays	Two 3.5 digits, max readout: +/- 1999
Analog bar	25 segments, linear or log scale (selectable)
Working temperature range*	0°C ...75°C (32°F...167°F)

*The system will work at sub-zero temperatures, at least down to -10°C (14°F) but the accuracy may be degraded.

Glossary.

DTE – Distance To Empty – projected distance at present consumption rate the vehicle can cover, at which point the battery is declared empty (usable capacity SOC = 0)

Depth Of Discharge – opposite of SOC – amount of charge (% of full) necessary to completely (re)charge the battery to 100% SOC. For instance 80% DOD (which is 20% SOC) requires replenishing 80% of useful capacity back to the battery to reach “battery full” condition (100% SOC).

TTF – Time To Full – Projected time at present charging rate required to completely (re)charge the battery to usable capacity = 100% SOC

SOC [Battery] State Of Charge, expressed in percentage of either declared usable or real capacity.

DOD – [Battery] Depth Of Discharge, opposite of SOC. When SOC is 0% DOD is 100%, and vice versa.

SOCM – State Of Charge Monitor. In the context of this manual – main controller PCB.

Usable Capacity (Ah) – portion of total real capacity (specified by the battery manufacturer) user choose to declare as available for use. When this amount of Ah taken out of fully charged battery, the battery reported to be empty (SOC = 0%). Usable capacity must not exceed total capacity. Depending on customer priorities, there is optimal compromise between total energy output available each discharge cycle and total battery cycle life. Usually declared capacity is set between 50% of real capacity specified at 1 hr discharge rate (lead acid battery) and up to 90% (lithium based battery). For instance total battery capacity specified by manufacturer is 80Ah. User does not want to discharge the battery deeper than 50% e.g. take out more than $80 \times 0.5 = 40\text{Ah}$. So usable capacity is declared to be 40Ah. Once 40Ah are taken out, SOC meter reports 0% remaining, as if no more energy is available for driving. 40Ah will be used to calculate DTE and TTF. This safeguard guarantees that user will not inadvertently over-discharge the battery beyond chosen maximum DOD. In this the example when SOC display reads = 0%

Glossary (continued)

(40Ah is taken out of fully charged battery), the battery actually still possess another 40Ah which actually could used. In this case EVision only makes user aware that the battery is being drained beyond chosen maximum.

Usable capacity concept allows avoiding available capacity correction due to Peukert effect.

Degree of Peukert effect depends on the particular battery properties and is specified by the manufacturer as Peukert exponent. It is very pronounced in lead acid batteries but to some degree exists in any type of batteries including lithium based. In general, because driving pattern for present cycle is not known ahead of time and near 100% DOD should never be allowed, specifying useable capacity less than full (manufacturer rated) capacity not only helps avoiding overdischarge and extending battery life but also allows avoiding unpredictability of DTE readout.

Total REAL capacity – capacity in Ah at EV discharge rate (usually 1 hour) specified by the battery manufacturer for 100% DOD. Beware that typically manufacturers specify total capacity at 20 hours discharge rate.

RTC – Real Time Clock – internal clock maintaining current year, month, day, hour, minute, second and 1/100's of a second information, used to time stamp data streaming out of serial port.

HMI – Human-Machine Interface. In case of EVision refers to the control sub-block containing rotary encoder, push button, alarm and night illumination LEDs and buzzer.

GND – Ground, typically connection to the vehicle chassy potential.

CAN – Controlled Area Network

CANH - CAN interface line driven HIGH during dominant bit transmission

CANL - CAN interface line driven LOW during dominant bit transmission

Glossary (continued)

This page is intentionally left blank

Appendix 1

Standard display colors selection user can specify by a number for different sections of the front overlay:

105	280	310	320	385	480
540	655	720	790	842	860
960	980	999	<i>Available display colors subset selection matrix</i>		

Full set of colors available as special order. Be aware that dark and dense colors will reduce apparent brightness.

103	104	105	105X	106	480	510	515	520	525
107	108	109	110	120	535	540	570	650	655
130	135	140	150	152	660	670	680	685	690
154	155	160	170	180	710	720	725	730	740
190	195	220	235	245	750	760	770	780	785
250	270	280	290	305	790	810	815	820	830
310	315	320	323	324	835	840	841	842	845
325	327	328	330	335	847	848	850	855	860
338	340	341	343	345	870	872	880	882	885
350	355	360	363	364	888	890	905	910	915
365	370	375	380	382	920	925	930	940	945
385	388	390	395	410	948	950	960	970	980
420	430	433	435	440	985	987	990	995	999
450	455	460	470	475	<i>Available display colors selection matrix</i>				

Appendix 2

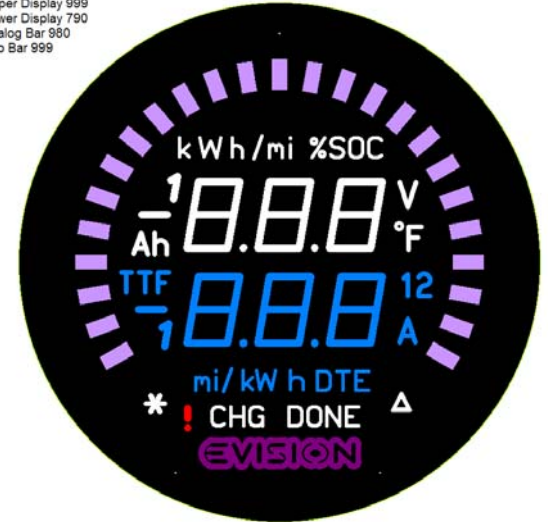
Default WARM and COOL display schemes.

Upper Display 540
Lower Display 280
Analog Bar 480
Status Bar 540



Warm Display

Upper Display 999
Lower Display 790
Analog Bar 980
Info Bar 999



Cool Display

Index

2	
25 segment	8, 9, 31
3	
35 pin Ampseal connector	23
A	
Alarm	9
Auxiliary 12V battery	5, 6, 24
E	
EVM	32
B	
BMS	12
C	
clamp cage	22, 24
color scheme	9
CV mode	36

D	
Delphi connector	27
digital inputs	21

E	
EVM	32

F	
factory default	31, 39
Favorite buttons	20, 31
fiber optic cable	12, 23

G	
Global reset	23

H	
HMI block	13
HMI knob	31, 32

L	
LED display	12

M	
main controller ...	5, 8, 11, 12, 15, 22, 23, 24, 25, 31, 33, 37, 39, 44

main controller PCB	12
Measurement PCB	12

O	
opto coupler	36

P	
Power consumption	43
precharging	25, 26, 27

R	
REAL capacity	45
RS232C	5, 12, 18, 32, 42

S	
serial communication	39
serial port ...	5, 28, 31, 32, 39, 40, 42, 45
shunt	4, 8, 16, 23, 24, 25, 26, 33, 36, 43
Speed sensor	10, 18
stock fuel gauge	12, 37

T	
temp sensors	24

U

USB.....32, 39

Index (continuing)

This page is intentionally left blank

Notes

