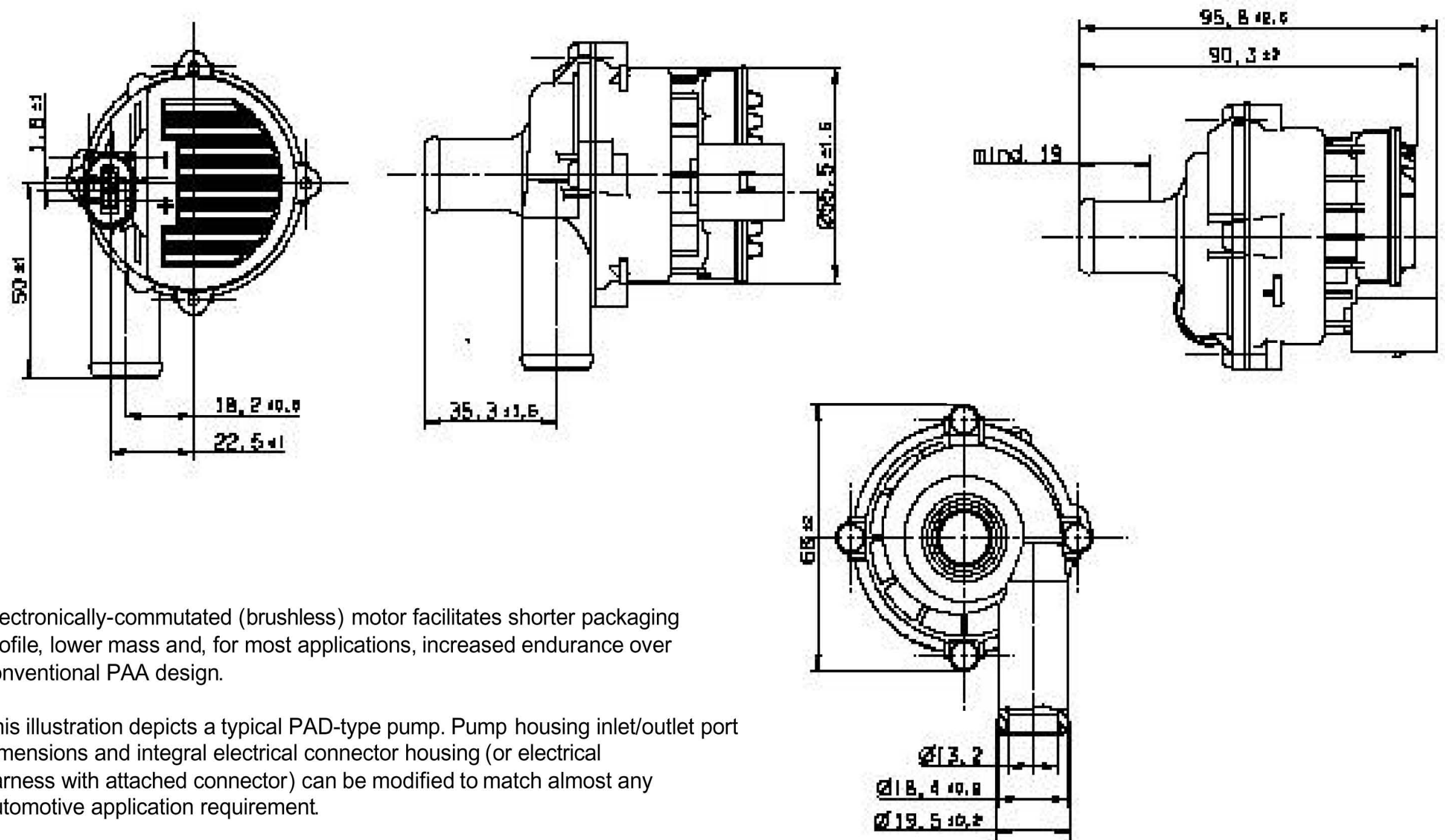


PAD-Type Auxiliary Coolant Pump with Short-Profile Brushless Motor

BeQIK
Be Beller Be Bosch



Electronically-commutated (brushless) motor facilitates shorter packaging profile, lower mass and, for most applications, increased endurance over conventional PAA design.

This illustration depicts a typical PAD-type pump. Pump housing inlet/outlet port dimensions and integral electrical connector housing (or electrical harness with attached connector) can be modified to match almost any automotive application requirement.

© Alle Rechte bei Robert Bosch GmbH, auch für den Fall von Schutzrechtsanmeldungen. Jede Verfügungsbefugnis, wie Kopier- und Weitergaberecht, bei uns.

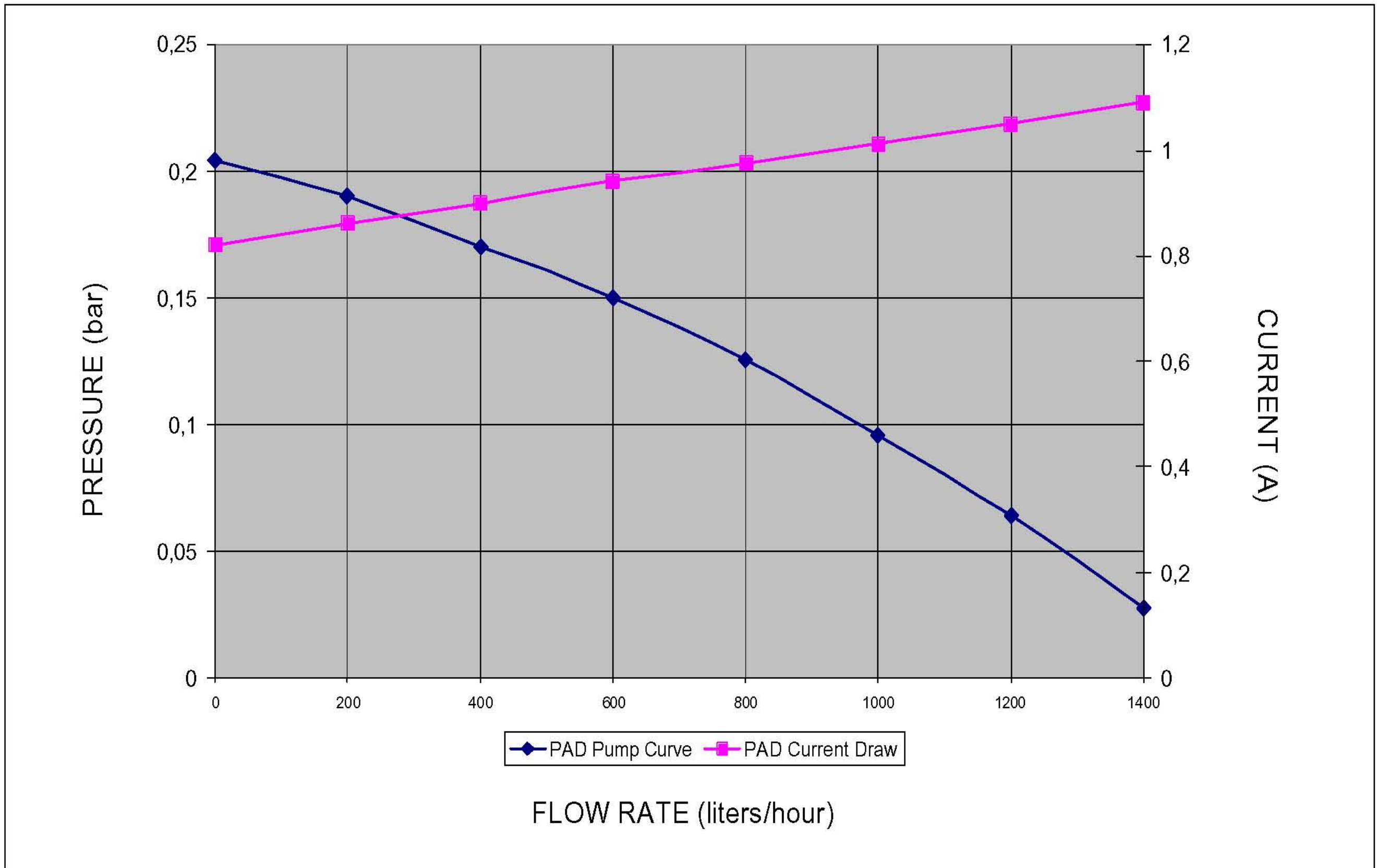
BOSCH 

K4-MK/VKF4 010316/005 PO

WARNING: DO NOT RUN PUMP DRY – BEARING FAILURE MAY OCCUR

PAD-Type Auxiliary Coolant Pump

Performance Curve



© Alle Rechte bei Robert Bosch GmbH, auch für den Fall von Schutzrechtsanmeldungen. Jede Verfügungsbefugnis, wie Kopier- und Weitergaberecht, bei uns.

BeQIK
Be Better Be Bosch

WARNING: DO NOT RUN PUMP DRY – BEARING FAILURE MAY OCCUR

BOSCH



K4-MK/VKF4 010316/006 PO